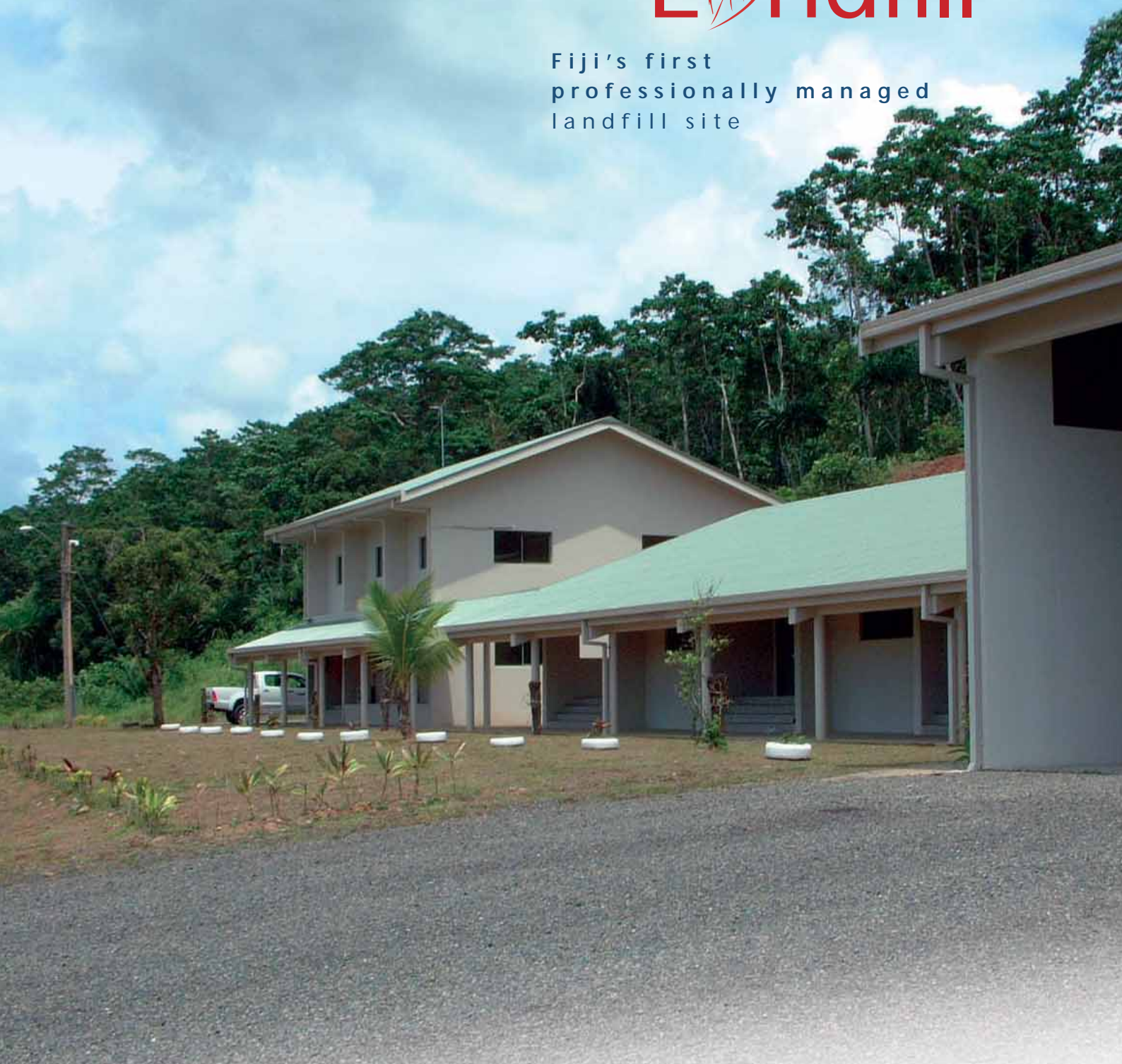


Welcome to

Naboro Landfill

Fiji's first
professionally managed
landfill site



Funded by the European Union and
The Government of the Republic of the Fiji Islands



Meeting the needs of local communities

The Naboro Landfill is a modern day standards landfill facility designed by the EU to be the first modern landfill of its type in the Pacific Islands with a lifetime of 50 years.

At a cost of approx \$14 million FJD, it was funded jointly by the EU and the Fiji Government. The Naboro Landfill accepts municipal waste from the Municipal Councils of Suva, Nausori, Nasinu and Lami, the Suva and Navua Rural Local Authorities, the towns of Navua and Pacific Harbour.

Naboro is expected to become the only landfill in the greater Suva area where waste may be deposited; over the Contract period it is envisaged that the average annual waste stream will be of the order of 100,000 tonnes.

Location of works

The Naboro Landfill is located on the Queens Road approximately 24km from central Suva. Access to the site is directly off Queens Road.



Engineering standards

It is engineered to a high standard in order to contain leachate and landfill gas produced by decomposing organic waste. The landfill protection liner prevents leachate permeating down into the underlying aquifers or nearby rivers causing spoiling of the local water. The daily cover and the final capping layer prevent odour issues and seepage of methane gas (one of the most harmful of the greenhouse gases).

Waste acceptance

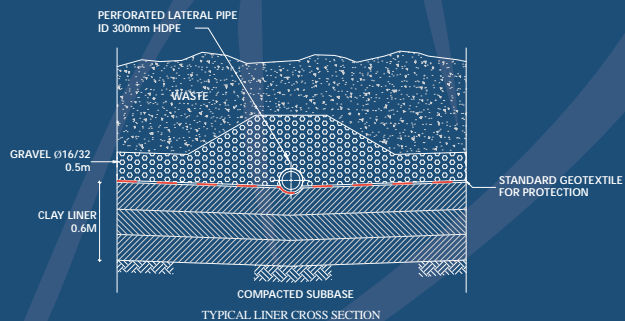
General municipal and commercial wastes are accepted at the landfill along with some wastes that require special consideration (special wastes). No hazardous wastes are accepted.

Site infrastructure

The site infrastructure comprises: gate office, weighbridge, administration block, workshop and main access roads along with the first stage clay liner and associated leachate drainage and stormwater control systems.

Landfill protection liner

The current liner occupies an area of approximately 2.3ha (out of a total of 7.09ha for Stage 1) and is constructed using a 600mm compacted clay liner over the whole floor, and this is then covered with a further 500mm thick drainage blanket. Through this drainage blanket is a network of Leachate collection pipes that connect to the main Leachate pipe, which drains into the Leachate treatment system.



Leachate treatment system

see diagram at right)

The Leachate management system is currently a passive treatment system consisting of one collection pond which flows to a multi cell partially aerated lagoons. This then flows to wetlands system and on into the stream.

The first cell (aerated lagoon) has a hydraulic retention time of 3 days. The following two cells (2 and 3) corresponding hydraulic retention times of 12 and 30 days. The outflow from cell 3 is to 1 hectare of surface flow wetlands with two open water zones (no plants).

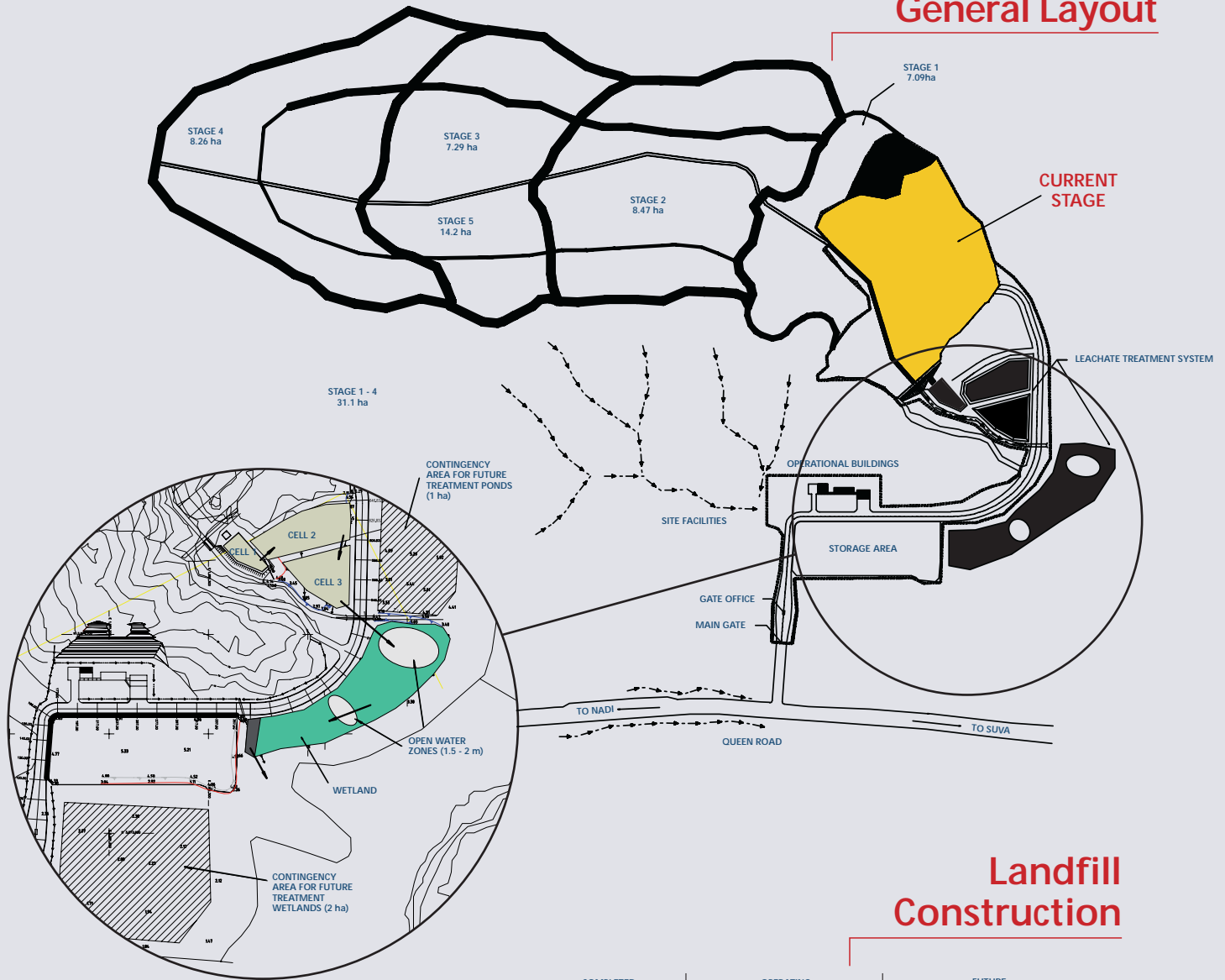
The treated leachate discharging into the stream is of stock drinking quality.

Public relations

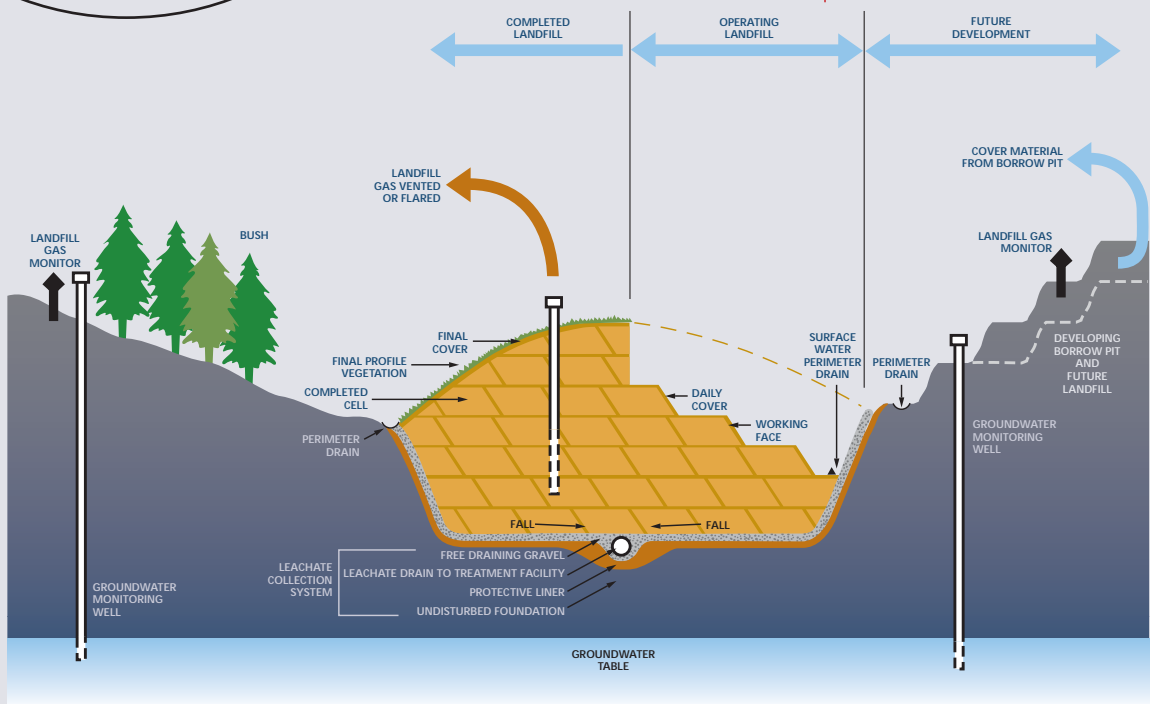
The Ministry of Labour, Industrial Relations, Tourism & Environment (Department of Environment), places considerable emphasis on its good relationship with members of the public and the neighbouring community. HG Leach (Fiji) Ltd maintains a very high standard of public relations. All dealings with landfill customers and visitors is carried out in a courteous, helpful and professional manner.

Naboro Landfill

General Layout



Landfill Construction



Naboro Landfill Factsheet

Owner	The Ministry of Labour, Industrial Relations, Tourism & Environment (Department of Environment); Government of Fiji
Engineer	The Ministry of Labour, Industrial Relations, Tourism & Environment (Department of Environment); Government of Fiji
Operator	HG Leach (Fiji) Ltd: Waste Managers and Contractors Naboro Landfill
Location	The Naboro Landfill is located on the Queens Road approximately 24km from central Suva. Access to the site is directly off Queens Road
Target area	Municipal Councils of Suva, Nausori, Nasinu, and Lami, the Suva and Navua Rural Local Authority, the town's of Navua and Pacific Harbour
Landfill area	7.09 hectares in existing stage 1 38.22 hectares in future stages 2,3,4 &5
Gate house	Computerised weighbridge system
Waste acceptance	Non hazardous solid waste
Hours of operation	Monday to Friday: 7:00am to 5:00pm Saturday: 7:00am to 4:00pm Sunday & Public Holidays: closed/or open by special arrangement
Primary equipment	Caterpillar 826 G Landfill Compactor (36 tonnes) Caterpillar D6H Bulldozer (22 tonnes) Caterpillar 320 Excavator (20 tonnes) Sakai 10 tonne Roller

H.G. Leach (Fiji) Ltd and the Ministry of Labour, Industrial Relations, Tourism & Environment

The Ministry of Labour, Industrial Relations, Tourism & Environment and its staff have been crucial to the ongoing success of the Naboro Landfill. Access to the Ministry, right up to the Director has been a key factor in the development of the first operation of this kind in the Pacific Islands. HG Leach is in constant dialogue with the Ministry on the future of Waste Management in Fiji and other projects. HG Leach also employs both Indigenous and Indo Fijians on the site and has invested in ongoing training of its entire staff.



Gate Fees

The fees reflect the cost of operating a high standard modern landfill, which provides maximum environmental protection while safely disposing of the community's waste.